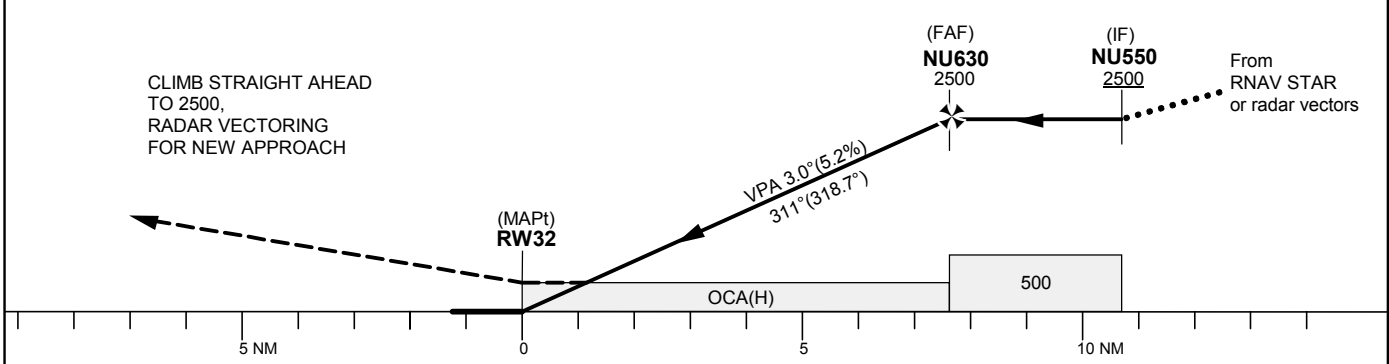
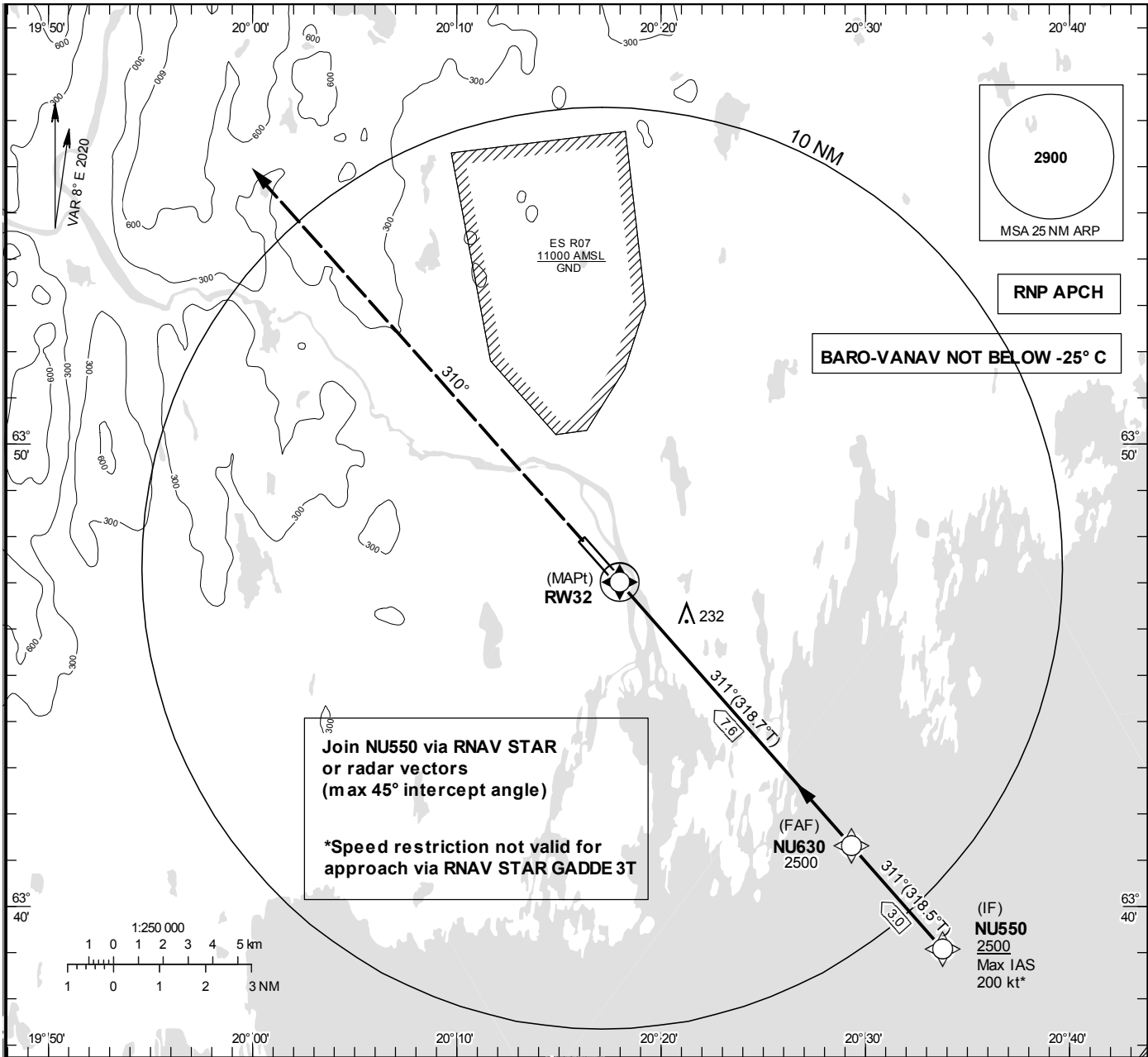


INSTRUMENT
APPROACH
CHART – ICAO

THR ELEV 17.3 ft, AD ELEV 25 ft
OCH are related to THR.
BRG are MAG (True).
ALT, HGT and ELEV in ft.

UMEÅ TOWER 119.805

UMEÅ
RNP RWY 32



OCA (H)					Final approach	Distance FAF-MAPt 7.6 NM					
Cat of ACFT	A	B	C	D	Dist to RW 32	7	6	5	4	3	2
LNAV/VNAV	370(360)	380(370)	390(380)	400(390)	ALT	2300	1980	1660	1340	1020	700
LNAV	480(470)				GS	kt	80	100	120	140	160
					Rate of descent	ft/min	425	530	635	745	850
										955	

CHANGE: Editorial

UMEÅ

RNP RWY 32 via RNAV STAR KETEL 3T/LENSO 3T or radar vectors

Path Desc	Waypoint Identifier	Fly-over	Course °M(°T)	Dist (NM)	Turn Dir	Altitude	Speed	VPA/ RDH	Rec Navaid	Navigation Specification
IF	NU550	-	-	-	-	+2500	-200	-	-	RNP APCH
TF	NU630	-	311°(318.5°)	3.0	-	@2500	-	-	-	RNP APCH
TF	RW32	Y	311°(318.7°)	7.6	-	@68	-	-3.0/50	-	RNP APCH
CA	-	-	310°(318.5°)	-	-	+2500	-	-	-	RNP APCH
VM	-	-	310°	-	-	-	-	-	-	RNP APCH

RNP RWY 32 via RNAV STAR GADDE 3T

Path Desc	Waypoint Identifier	Fly-over	Course °M(°T)	Dist (NM)	Turn Dir	Altitude	Speed	VPA/ RDH	Rec Navaid	Navigation Specification
IF	NU550	-	-	-	-	+2500	-	-	-	RNP APCH
TF	NU630	-	311°(318.5°)	3.0	-	@2500	-	-	-	RNP APCH
TF	RW32	Y	311°(318.7°)	7.6	-	@68	-	-3.0/50	-	RNP APCH
CA	-	-	310°(318.5°)	-	-	+2500	-	-	-	RNP APCH
VM	-	-	310°	-	-	-	-	-	-	RNP APCH